



F89-0211

IMMERSION WELLS & PACKING NUTS

1/2" and 3/4" NPT sizes for hydronic element insertion.

FEATURES

- Wells are used where it is desired that the control operates from the temperature of a liquid in a closed system
- The bulb of the control can be removed from an immersion well in the tank wall with out draining the boiler tank
- The packing nut can be used with any of the remote bulb types listed
- Packing nuts permit closer control than wells because the bulb is directly immersed in the liquid

SPECIFICATIONS

Application Note For use in liquids that are not corrosive to brass and copper
 Not recommended for use above 100 psi, 250°F (120°C)

UNIVERSALLY INTERCHANGEABLE WELLS

BASIC TYPES WELL IS USED WITH	BULB SIZE OF CONTROL USED	WELL DESCRIPTION PIPE SIZE NPT	WELL DESCRIPTION SHANK	FIGURE NUMBER	DIMENSIONS A	DIMENSIONS B	DIMENSIONS C	MODEL NUMBER	ITEM NUMBER
All	3-1/2 x 3/8"	1/2"	Standard	2	1-13/16"	3"	3-5/16"	F89-0211	F0089 021100S1
All	3-1/2 x 3/8"	1/2"	Std. Extended	2	3-5/16"	3"	3-5/16"	F89-0212	F0089 021200S1
All	3-1/2 x 3/8"	3/4"	Standard	2	1-13/16"	3"	3-5/16"	F89-0213	F0089 021300S1
All	3-1/2 x 3/8"	3/4"	Std. Extended	2	3-5/16"	3"	3-5/16"	F89-0214	F0089 021400S1
All	3-1/2 x 3/8"	3/4"	Extra Extended	2	4-13/16"	3"	3-5/16"	F89-0215	F0089 021500S1
1609, 1629, 2A23	5-3/4 x 3/8"	1/2"	Standard	3	15/8"	6"	6-5/16"	F89-0027	F0089 002700S1
11B06, 11B37, 1182	3-1/2 x 7/16"	3/4"	Standard	3	15/8"	2-13/16"	3-1/8"	F89-0033	F0089 003300S1
11B06, 11B37, 1182	3-1/2 x 7/16"	1/2"	Standard	3	15/8"	2-13/16"	3-1/8"	F89-0036	F0089 003600S1
All	2-15/16 x 7/16"	1/2"	Standard	3	15/8"	2-13/16"	3-1/2"	F89-0148	F0089 014800S1
11B18, 11B05, 11B55, 1131	—	1/2"	Standard	4	1-5/8"	2-13/16"	3-1/8"	F89-0062	F0089 006200B1
11B18, 11B05, 11B55, 1131	—	3/4"	Standard	4	1-5/8"	2-13/16"	3-1/8"	F89-0063	F0089 006300B1

PACKING NUT

DESCRIPTION	FIGURE NUMBER	MODEL NUMBER	ITEM NUMBER
Packing nut with 1/2" threads	1	F55-0088	F0055 008800B1

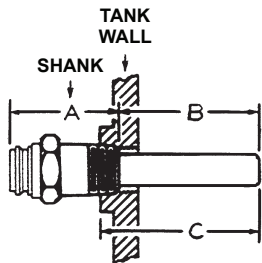


FIG. 3

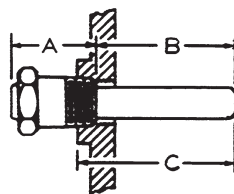


FIG. 4

